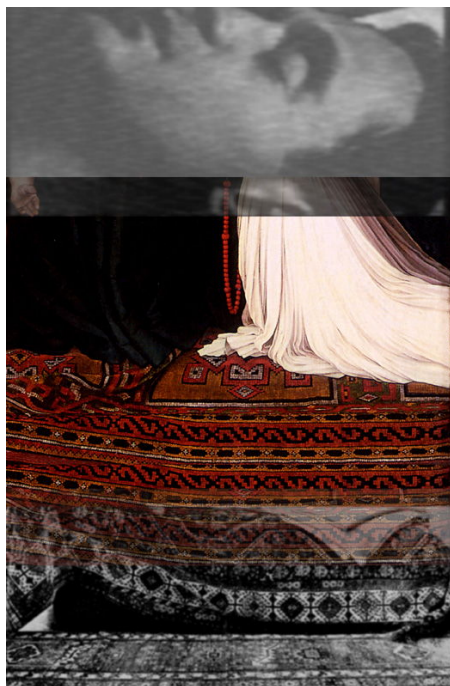


# GALERIE DIX9 Hélène Lacharmoise

Composite 10, Freud - Holbein, 2010

---



**Anne Deguelle**

*Composite 10, Freud - Holbein , 2010*

Composite

printing ink pigment on rag paper laminated on Dibond

Image: 119 x 79 x 2 cm

Edition of 3 ex + 2 AP

courtesy Galerie Dix9 Hélène Lacharmoise

**Description:**

Anne Deguelle reactivates the principle of «composite training» and mixes photographs of carpets from the Freud's collection to fragments of paintings by Holbein or Ghirlandaio. By a set of formal echoes, it makes resonances, and give another interpretation of the decorative.

**Exhibitions:**

"Sigmund'rug", Freud Museum, Londres 2011